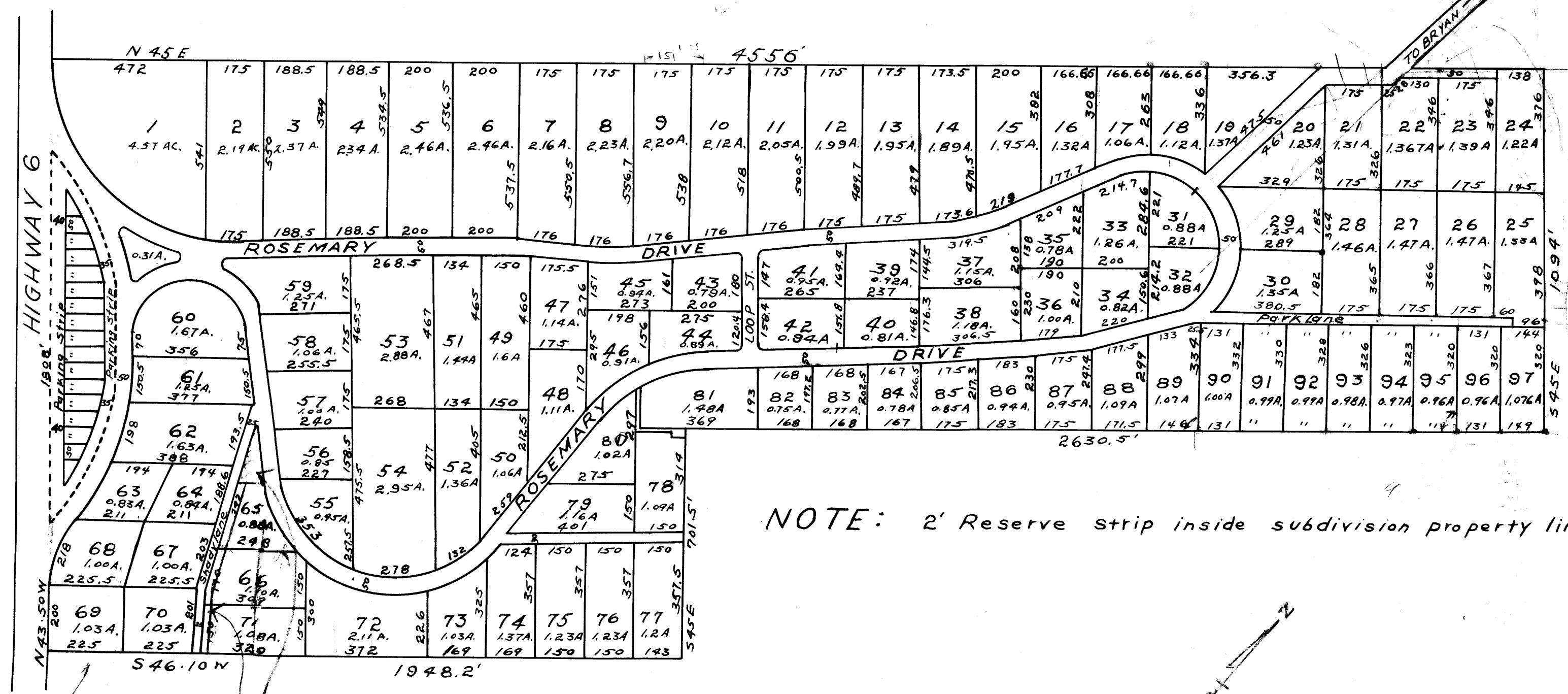


BEVERLY ESTATES  
 D/R 98/420  
 Scale 1" ≈ 300'  
 Dec., 1938



NOTE: 2' Reserve strip inside subdivision property line.

SEE THAMMELSON  
 SUBDIVISION

Vol 163, Pg 497  
 E. Brewster to Beverly Est. Corp  
 25' x 712' strip & Triangle  
 Prop for street & park purpose  
 Prop transferred to City of  
 Bryan upon annexation of  
 Beverly Est in 1951 (Ord 0-51-46)  
 CLM 4/2006

See  
 1/20/38  
 1/20/38  
 1/20/38